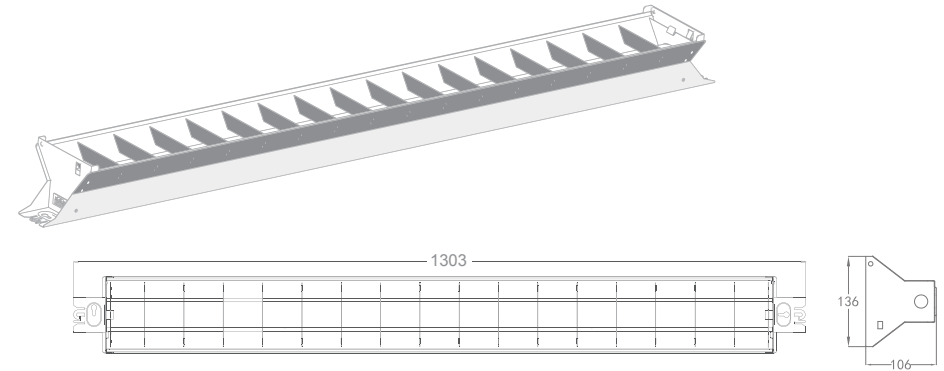


OPERATING MANUAL

Maat M1200 - Basic CCT

Important: Please read the instruction manual carefully prior to installation and keep it for future reference.



Ordering code	Product Fitting series	Power (W)	Function Description
M1200 60 000 CCT	M1200	60	Basic LED,color temperature selectable

Mounting: Wall or Ceiling

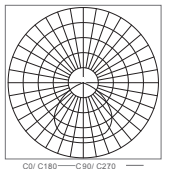
Light features:

Ra: >80

Life Time: 5 years

Light Source: LED SMD2835

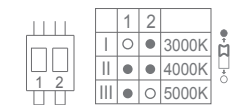
Input:220V-240V 50/60Hz



Color temperature code:

Code	Color temperature	CCT(K)	Lumen
30K	Warm White	3000	6720
40K	Natural White	4000	7080
50K	Cool White	5000	6900

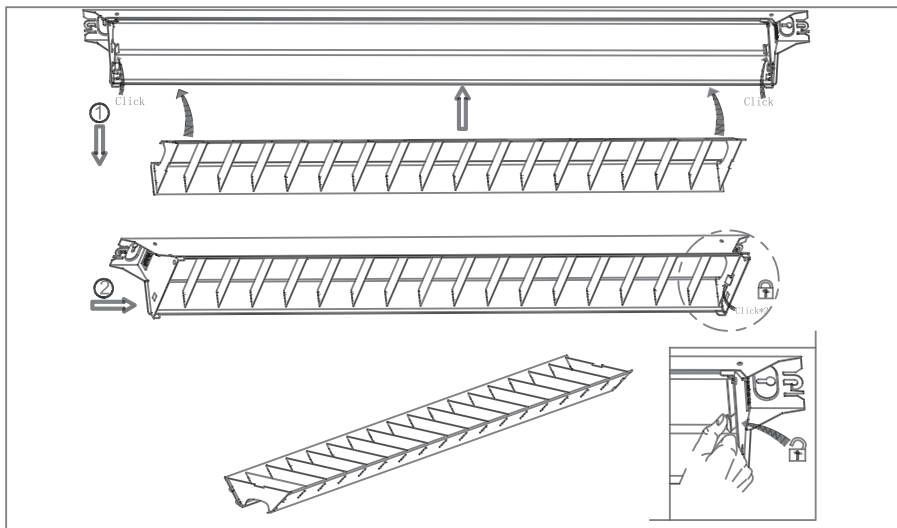
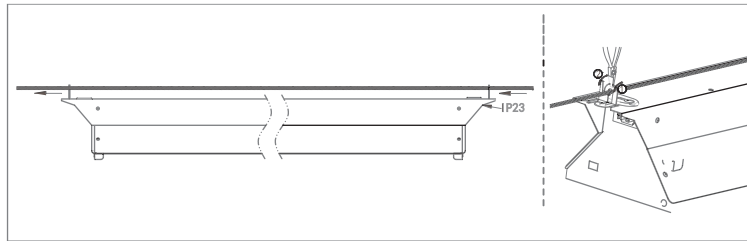
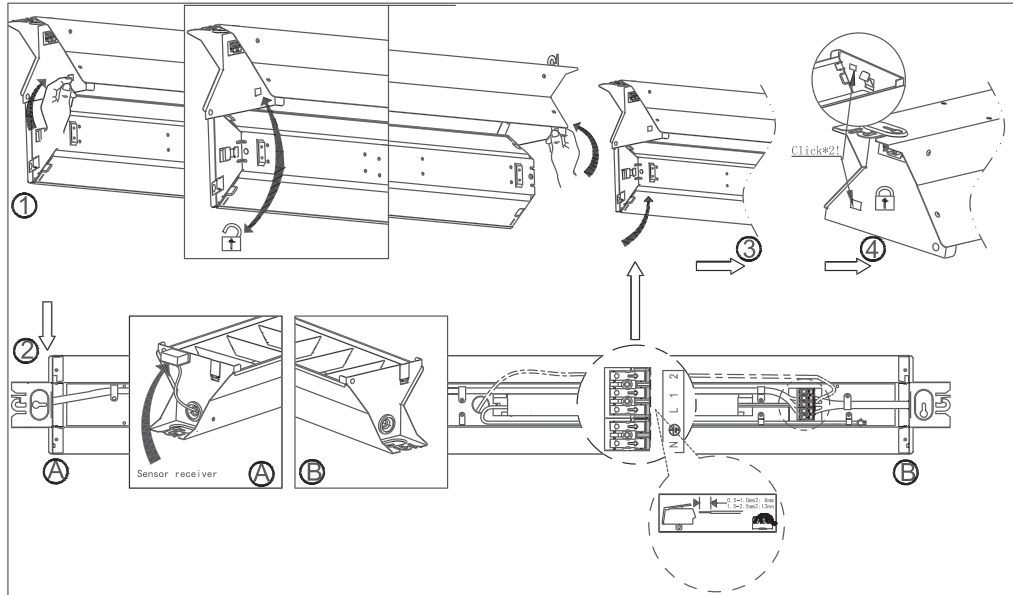
CCT:



Accessories

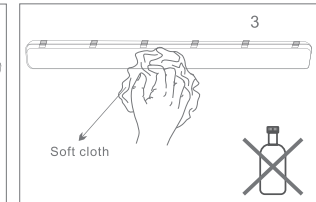
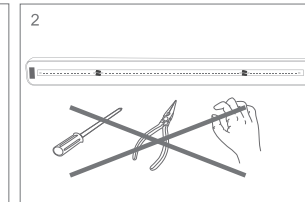
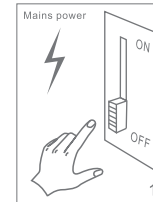
No.	Pic.	Qty.	Usage
1		2	Fitting base
2		2	Rawl plug

Installation:



Maintenance

1. Cut off the main power first
2. Don't touch LEDs while maintaining or cleaning
3. Don't use chemicals to clean the fixture.



Environmental protection: waste electrical products should not be disposed of with household waste. Please recycle where facilities exist. Check with your local authority or retailer for recycling advice.

Caution:

1. The product must be installed by professional technicians and power supply must be cut off before installation.
2. The diameter for AC input wire is 0.75mm² (complying with 60245 IEC57), which complies with the latest IEE electrical standards or national standards.
3. Do not touch the electronic circuit and its components.
4. Contact an authorised technical service centre for any repairs possibly required use only original spare parts.
5. Do not touch LED while installing or maintaining.
6. After installation, remember to seal the entrance hole with glue.
7. The light source contained in this luminaire shall only be replaced by the manufacturer or his service agent or a similar qualified person.